



Hotel Name	Star Rating	Distance from BITEC		Rate for Single Occupancy
		Driving	via BTS	
Aloft Bangkok	4	24 mins	39 mins with BTS (Via Nana Station)	USD 112.00
Avani Sukhumvit Bangkok	4	13 mins	39 mins with BTS (Via On Nut)	USD 100.00
Bangkok Marriott Marquis Queen's Park	5	21 mins	39 mins with BTS (Via Phrom Phong)	USD 186.00
Conrad Bangkok	5	25 mins	43 mins with BTS (Via Phloen Chit Station)	USD 202.00
Courtyard by Marriott Bangkok	4	25 mins	45 mins with BTS (Via Chit Lom Station)	USD 146.00
Cross Vibe Bangkok Sukhumvit	4	19 mins	25 mins with BTS (Via On Nut)	USD 69.00
DoubleTree Sukhumvit Bangkok	4	20 mins	40 mins with BTS (Via Phloen Chit Station)	USD 140.00
Holiday Inn Bangkok Phloen Chit Road	4	21 mins	40 mins with BTS (Via Chit Lom Station)	USD 112.00
Hyatt Place Bangkok Sukhumvit	4	17 mins	30 mins with BTS (Via Phrom Phong)	USD 100.00
ibis Styles Bangkok Sukhumvit Phra Khanong	4	19 mins	50 mins with BTS (Via Phra Khanong)	USD 90.00
JW Marriott Hotel Bangkok	5	16 mins	39 mins with BTS (Via Phloen Chit Station)	USD 202.00
Lumen Bangkok Udomsuk Station	3	9 mins	40 mins with BTS (Via Udom Suk Station)	USD 69.00
Mercure Bangkok Sukumvit 11	4	23 mins	37 mins with BTS (Via Nana Station)	USD 125.00
Novotel Bangkok Ploenchit Sukhumvit	4	26 mins	32 mins with BTS (Via Phloen Chit Station)	USD 115.00
Radisson Blue Plaza Bangkok	4	17 mins	35 mins with BTS (Via Asok Station)	USD 137.00



Aloft Bangkok

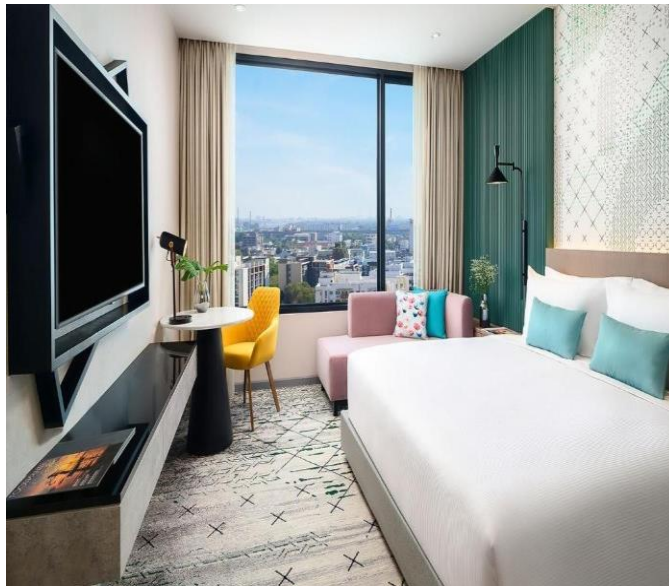


Distance from BITEC:

24 mins driving

39 mins with BTS (via Nana Station)

Aloft Bangkok - Sukhumvit 11 is a convenient 5-minute walk from Nana BTS Skytrain Station. Providing free Wi-Fi throughout the hotel, it also has an outdoor pool, and a 24-hour gym. Aloft Bangkok - Sukhumvit 11 offers a free tuk-tuk shuttle to Nana BTS Skytrain Station and Sukhumvit MRT Subway Station. Free parking is available.



Avani Sukhumvit Bangkok



Distance from BITEC:

13 mins driving

22 mins with BTS (via On Nut Station)

Convenience meets style in the first upscale hotel to hit Bangkok's trendy On Nut neighborhood. Avani Sukhumvit Bangkok has everything you need for a getaway, business, or pleasure. Get out and explore the city's sights via the direct BTS connection, or stroll the surroundings to discover local cafés, art galleries, and street eats.



Bangkok Marriott Marquis Queen's Park



Distance from BITEC:

18 mins driving

39 mins with BTS (via Phrom Phong Station)

Discover a tranquil oasis in the heart of Sukhumvit at Bangkok Marriott Marquis Queens Park. Stay at our luxury hotel in Bangkok to meet, play, dine, and sleep in Thailand's exotic capital. Perfect for Thailand business trips and vacations our hotel in Sukhumvit is a short walk from popular downtown attractions and within easy reach of the BTS Skytrain, MRT subway, Queen Sirikit National Convention Center QSNCC and Suvarnabhumi Airport.



Conrad Bangkok



Distance from BITEC:

25 mins driving

43 mins with BTS (via Phloen Chit Station)

Located in Bangkok's central business district, we're minutes from Phloen Chit BTS station via free shuttle. The Skytrain connects you to the best of Bangkok including Siam's iconic shopping destinations, and the nearby Lumpini and Benchakitti parks provide a tranquil escape. Recharge in our wellness center and enjoy skyline views from our tropical outdoor pool and gardens.



Courtyard by Marriott Bangkok



Distance from BITEC:

25 mins driving

44 mins with BTS (via Chit Lom Station)

At Courtyard by Marriott Bangkok, we invite you to discover new passions. Courtyard by Marriott Bangkok is a multi-award-winning hotel located in a peaceful area at the heart of Bangkok's CBD. A short walk or hotel tuk-tuk ride to Rajdamri and Chit Lom BTS Skytrain stations, you are moments from Bangkok's best shopping malls such as Siam Paragon and centralWOrld, corporate offices, attractions, entertainment, and dining, from Thai street food to Michelin star restaurants.



Cross Vibe Bangkok Sukhumvit (Formerly X2)



Distance from BITEC:

19 mins driving

26 mins with BTS (via On Nut Station)

Discover a stylish and contemporary hotel located in the vibrant Sukhumvit district of Bangkok, just a stone's throw away from the On Nut BTS station. While our hotel provides a serene escape from the bustling city, it remains conveniently close to all the excitement.



**Double Tree by Hilton
Bangkok**



Distance from BITEC:

20 mins driving

41 mins with BTS (via Phloen
Chit Station)

Take in city center views from our downtown Bangkok hotel. We're a 10-minute walk from Nana Plaza and Central Embassy, with multiple BTS stations nearby. Our fitness center is open all day, and we have an outdoor pool. Enjoy local specialties and international fare at our all-day restaurant, and a warm cookie when you arrive.



**Four Points by Sheraton
Bangkok Ploenchit (Formerly
Novotel Bangkok Ploenchit)**



Distance from BITEC:

17 mins driving

41 mins with BTS (via Phloen
Chit Station)

The hotel is accessible by major roads. Several embassies and significant commercial locations, as well as many of Bangkok's greatest shopping attractions, are within walking distance or a short ride on the adjacent BTS Skytrain Ploenchit station.



Holiday Inn Bangkok Phloen Chit Road

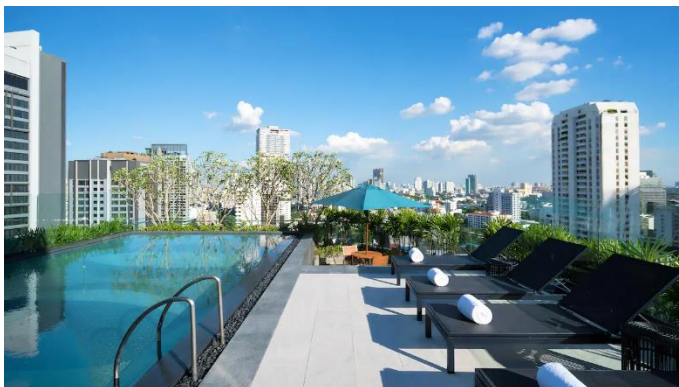


Distance from BITEC:

21 mins driving

39 mins with BTS (via Chit Lom Station)

Nestled in the city's vibrant centre, 35 minutes from Suvarnabhumi and Don Mueang airports, Holiday Inn is your gateway to the best of Bangkok. With the BTS Skytrain Chit Lom station and the Skywalk at our doorstep, shopping centres like CentralWorld and Siam Paragon are within easy reach as well as cultural gems like the Grand Palace, Chinatown, and Chatuchak Weekend Market.



Hyatt Place Bangkok



Distance from BITEC:

17 mins driving

34 mins with BTS (via Phrom Phong Station)

Hyatt Place Bangkok Sukhumvit is located right in the heart of Bangkok in Sukhumvit area. Whether travelling for business or leisure, you'll feel perfectly placed to explore this incredible city, and right at home in our modern roomy rooms.



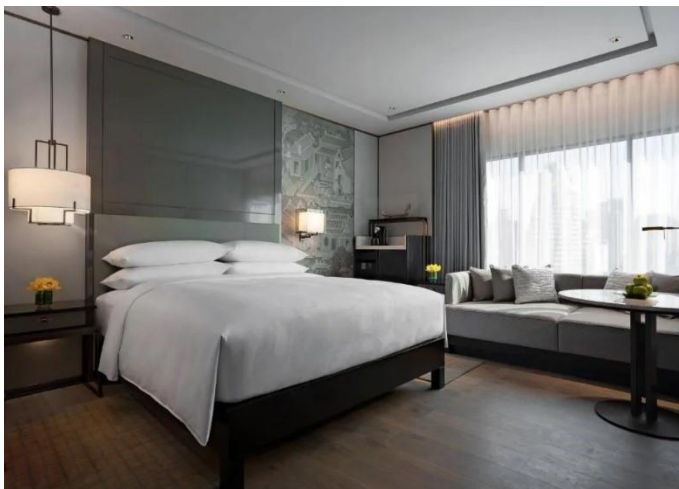
**ibis Styles Bangkok Sukhumvit
Phra Khanong** ★★★★★

Distance from BITEC:

19 min driving

50 mins with BTS (via Phra Khanong)

Set in Bangkok and with Emporium Shopping Mall reachable within 3.4 km, ibis Styles Bangkok Sukhumvit Phra Khanong offers concierge services, non-smoking rooms, a fitness centre, free WiFi throughout the property and a restaurant. This 4-star hotel offers a kids' club and room service. The hotel features an indoor pool and a 24-hour front desk.



JW Marriott Hotel Bangkok



Distance from BITEC:

16 min driving

40 mins with BTS (via Phloen Chit
Station)

Comfortably furnished, elegant rooms at JW Marriott Hotel Bangkok, a Marriott Luxury & Lifestyle Hotel, feature a flat-screen TV and soundproof walls. Located on Sukhumvit 2, it is just a 5-minute walk from Ploenchit and Nana BTS Skytrain stations. This luxurious city retreat offers a pampering spa and an outdoor pool.



Lumen Bangkok Udomsuk Station

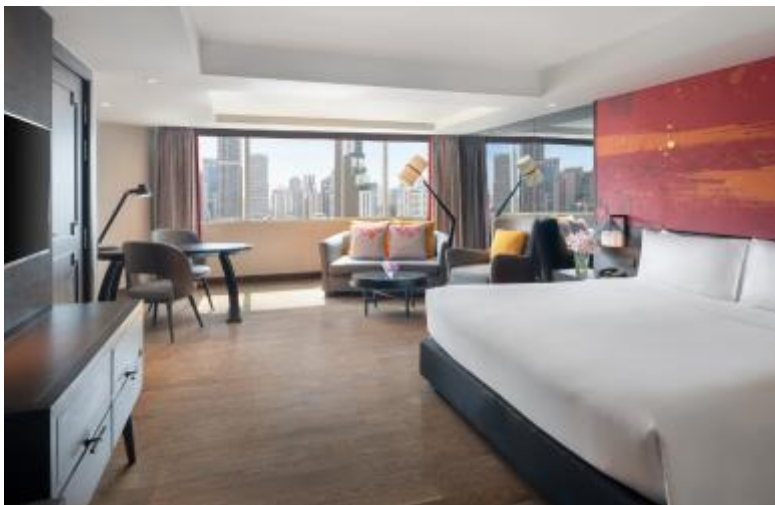


Distance from BITEC:

10 mins driving

20 mins with BTS (via Udom Suk Station)

Set in Bangkok, 1.5 km from Bangkok International Trade and Exhibition Centre BITEC, Lumen Bangkok Udomsuk Station offers accommodation with an outdoor swimming pool, free private parking, a fitness centre and a restaurant. This 4-star hotel offers a bar. The accommodation provides a 24-hour front desk, airport transfers, room service and free WiFi throughout the property.



Mercure Bangkok Sukumvit 11



Distance from BITEC:

23 min driving

37 mins with BTS (via Nana Station)

Mercure Bangkok Sukhumvit is located in the bustling Soi 11 near BTS NANA with ample hip restaurants and bars, shopping malls, tourist attractions and the best entertainment centres Bangkok has to offer.



Radisson Blu Plaza Bangkok



Distance from BITEC:

17 mins driving

36 mins with BTS (via Asok Station)

The Radisson Blu Plaza Bangkok offers savvy travelers a central location, only 200 meters from the subway and sky train, and stunning views from its 30th floor. Enjoy easy access to Bangkok's major conference centers, QSNCC and BITEC. Walk to destinations like Benjakitti Park, and shop your way through nearby malls like The Emporium, EmQuartier, and Terminal 21.